






pH Selection Guide

		pH 1	pH 2	pH 3	pH 5	pH 6
						
	Spare Sensor Pt. No.	32011001	32011002	32011003	3201115	3201116
	Sensor Bundle Pt. No.	32011005	32011006	32011007	3201117	3201118
Applications	Potable Water	✗	✓	✗	✓	✓
	Waste Water	✗	✗	✓	✓	✗
	Pool / Spa	✓	✗	✗	✗	✗
	Process	✗	✓	✓	✓	✓
	Boiler Feedwater	✗	✗	✗	✗	✓
Mounting Options	Single Open Flow Cell	✓	✓	✓	✓	✓
	Dual Open Flow Cell	✓	✓	✓	✓	✓
	Triple Open Flow Cell	✓	✓	✓	✓	✓
	Closed Flow Cell	✗	✓	✓	✓	✓
	Autoflush (Flow Cell)	✗	✓	✓	✓	✓
	Autoclean Immersion (Dip)	✗	✗	✓	✗	✗
	Autoclean Immersion (In Pipe)	✗	✗	✓	✗	✗
	At Line Tee	✗	✓	✓	✓	✓
	Handrail	✗	✗	✓	✓	✓
	Welding Stub	✗	✓	✓	✓	✓
Specifications	Connector	BNC Connector	Built-in cable	Built-in cable	Built-in cable	Built-in cable
	Standard Cable Length	1m	6m	6m	6m	6m
	Submersible*	✗	✗	✓	✓	✓
	Inbuilt Temperature	✗	✓	✓	✓	✓
	Max. Temperature	80°C	80°C	80°C	100°C	100°C
	Automatic Temp. Compensation	✗	✓	✓	✓	✓
	Conductivity	>100 µS/cm	>100 µS/cm	>100 µS/cm	>100 µS/cm	<300 µS/cm
	Junction	Single	Single	Double	Double	Double
	Life Expectancy (Application Dependent)	12-18 months	12-18 months	12-18 months	3 years	18 months
	Back / Front Thread	¾" NPT (Back Only)	¾" NPT (Front & Back)	¾" NPT (Front & Back)	¾" NPT (Front & Back)	¾" NPT (Front & Back)

*It is recommended that the probe be submerged on the end of a pole with the cable protected by running inside the pole.

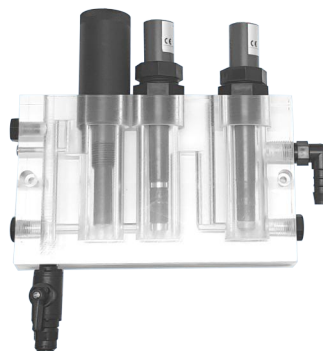
Mounting Options



Single Open Flow Cell
PN:32100001



Double Open Flow Cell
PN:32100002



Triple Open Flow Cell
PN:32100007



Single Closed Flow Cell
PN:32100010



At Line Tee (screw in)
PN:32100102

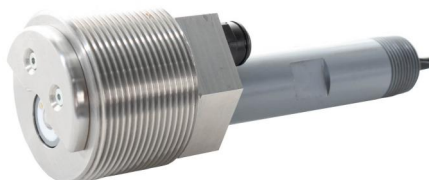


At Line Tee (quick connect)
PN:32100103



Welding Stub (screw in)
PN:32100106

Autoclean Options



Autoclean Insertion
PN:36000031



Autoflush Cell
PN:36500001



Autoclean Immersion
PN:36000030